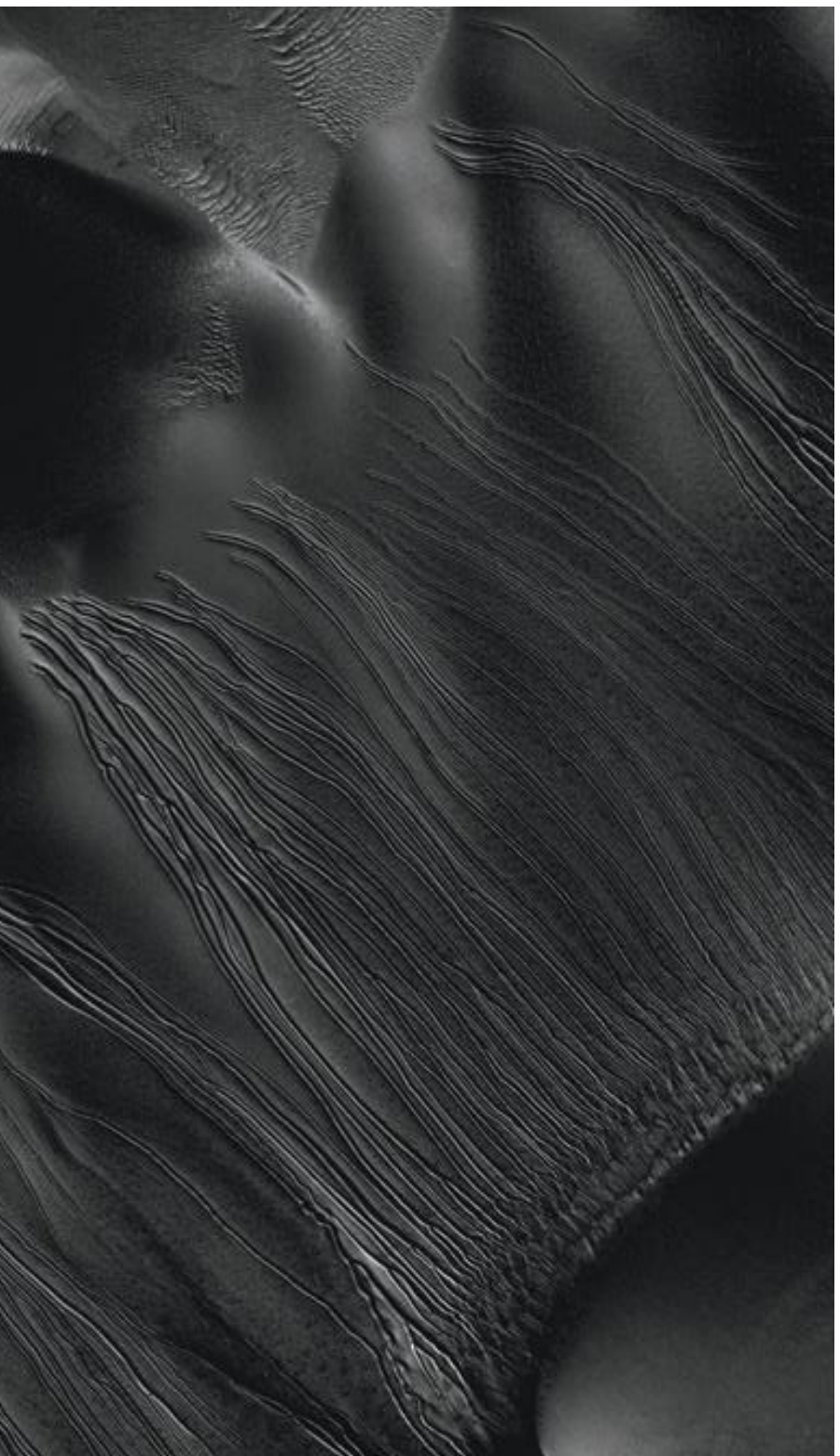


Mesas and Dunes in Mars' Hellas Basin

<http://blogs.discovermagazine.com/badastronomy/2009/04/13/dune-mars-2/>

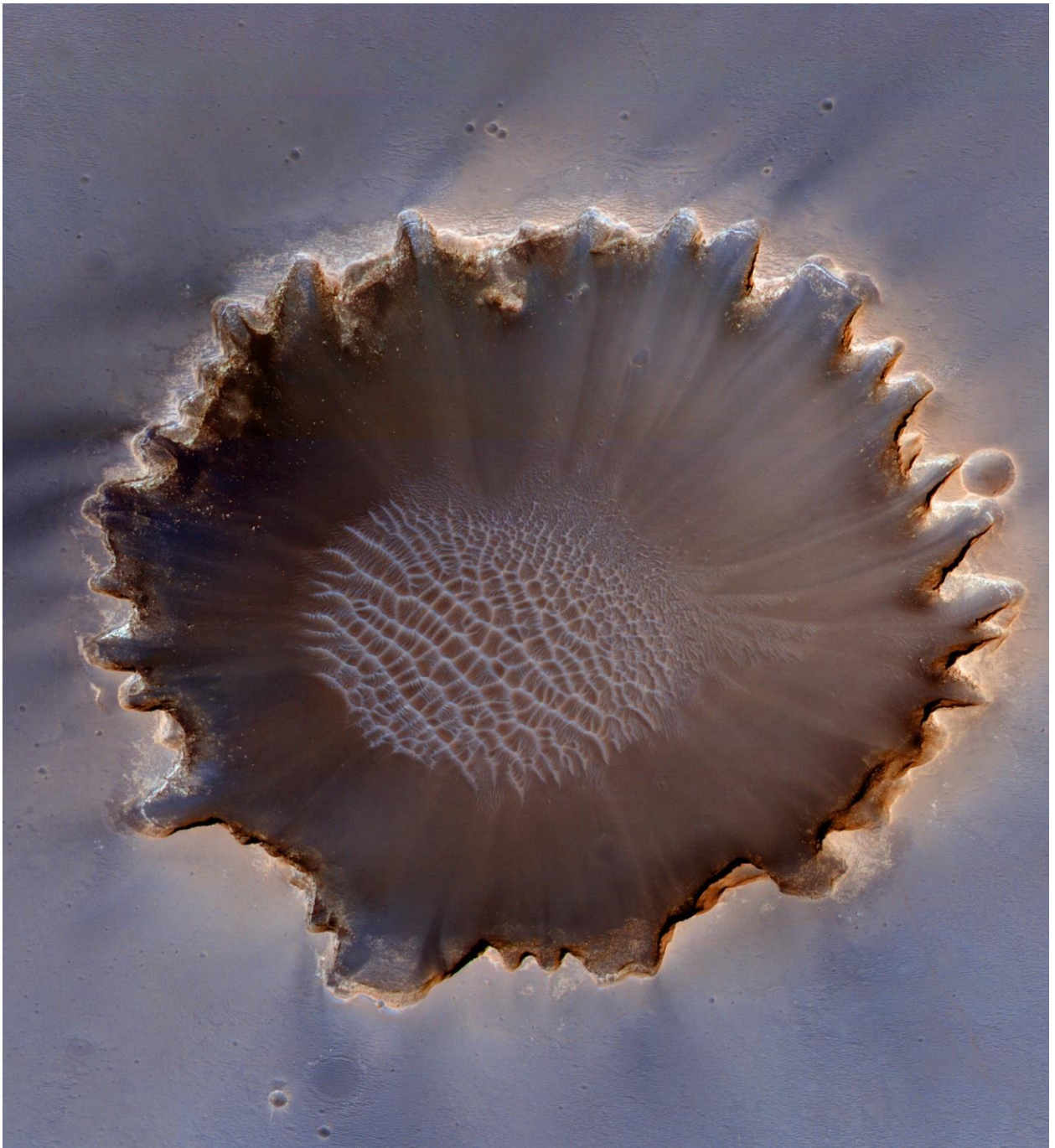


Linear Gullies on Mars

Taken by HiRISE on the Mars Reconnaissance Orbiter

http://www.nasa.gov/mission_pages/MRO/news/mro20130611.html

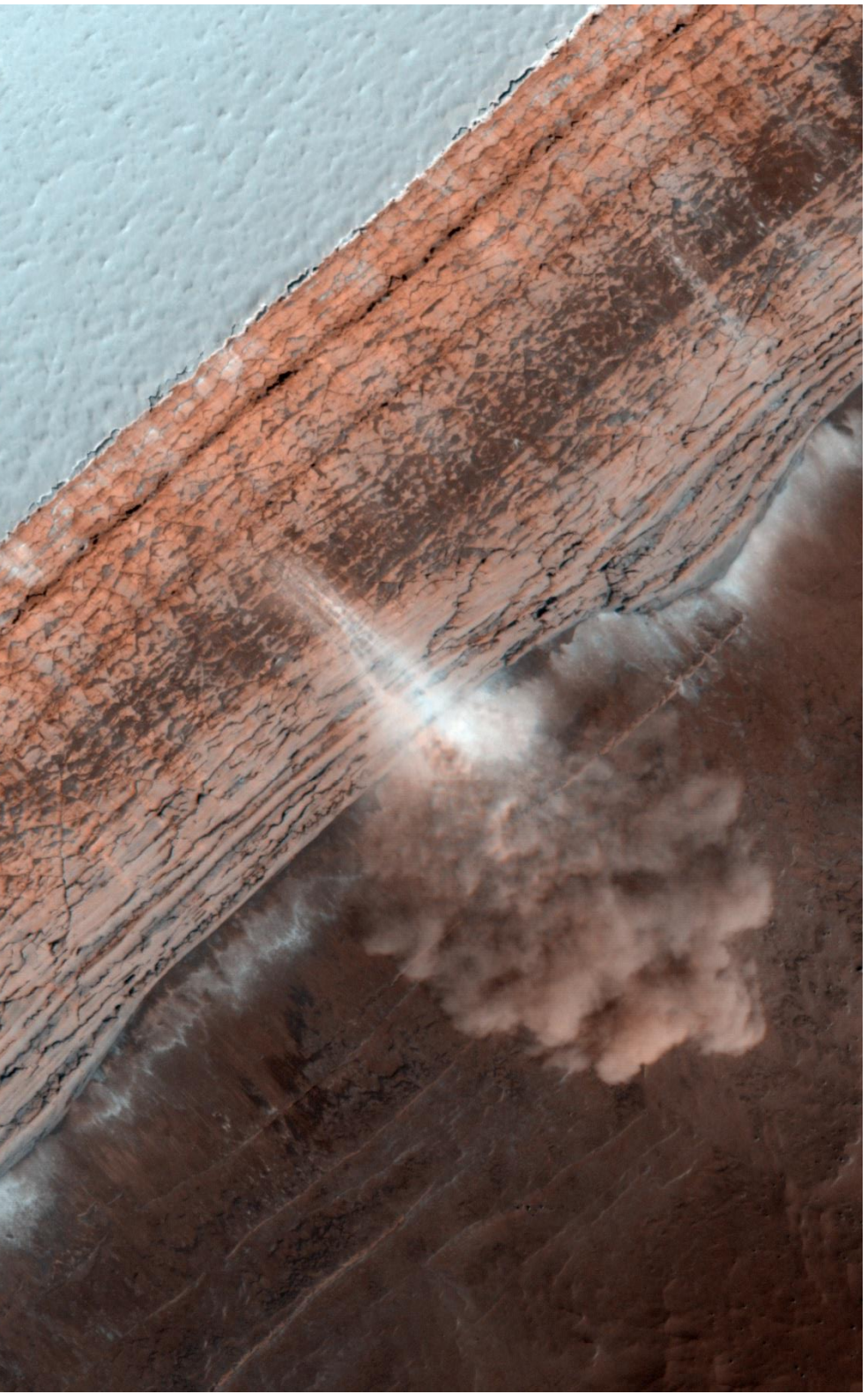
Image credit: NASA/JPL-Caltech/Univ. of Arizona



Victoria Crater on Mars

Taken by HiRISE on the Mars Reconnaissance Orbiter

Image: NASA/JPL-Caltech/University of Arizona



Avalanche on Mars!

Taken by HiRISE on the Mars Reconnaissance Orbiter

Image credit: NASA/JPL-Caltech/Univ. of Arizona

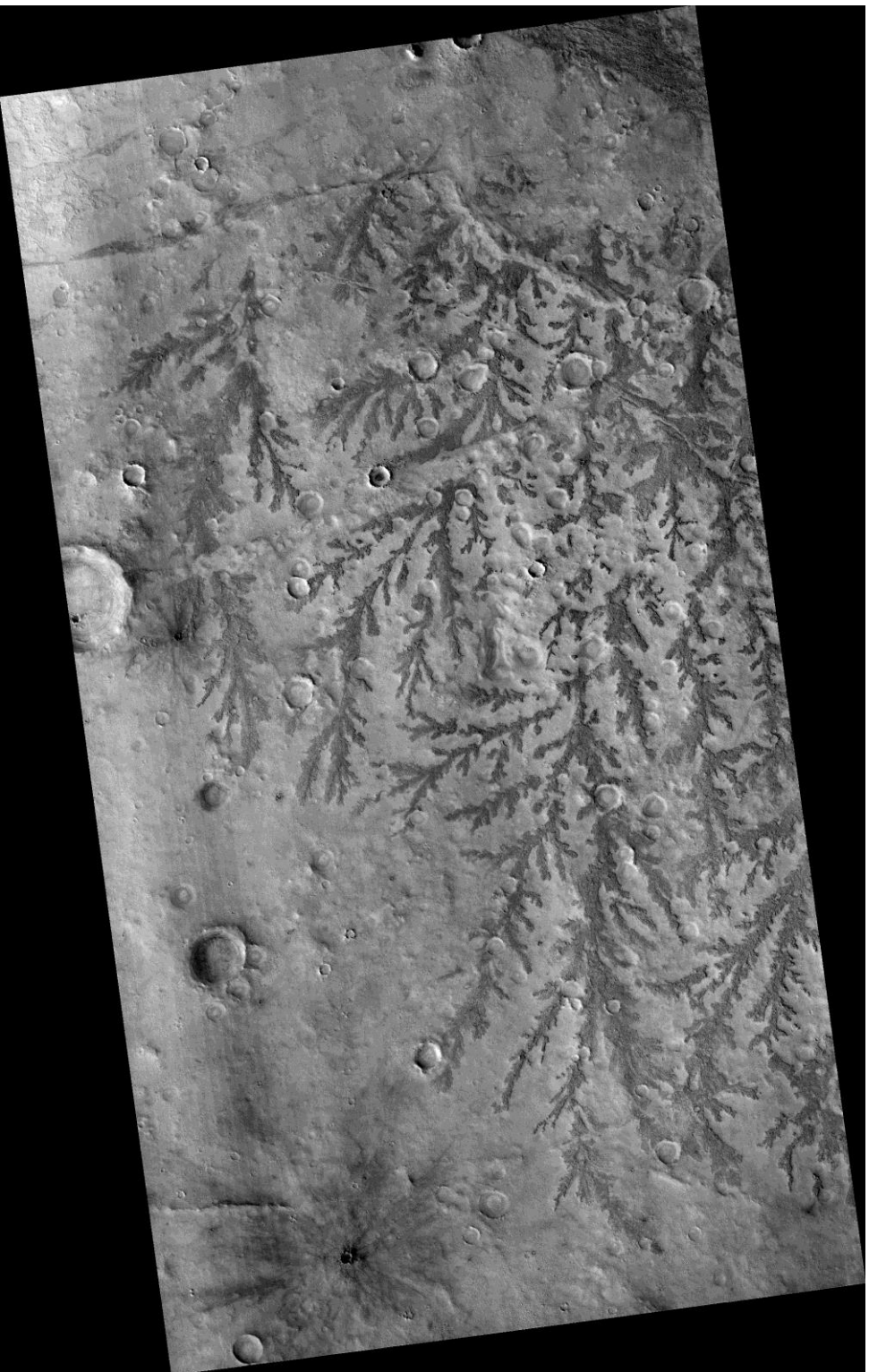


Branched Features on the Floor of Antoniadi Crater on Mars

Taken by HiRISE on the Mars Reconnaissance Orbiter

Image credit: NASA/JPL-Caltech/University of Arizona

http://hirise.jpl.nasa.gov/ESP_012725_2015



Branched Features on the Floor of Antoniadi Crater on Mars

Taken by HiRISE on the Mars Reconnaissance Orbiter

Image credit: NASA/JPL-Caltech/University of Arizona

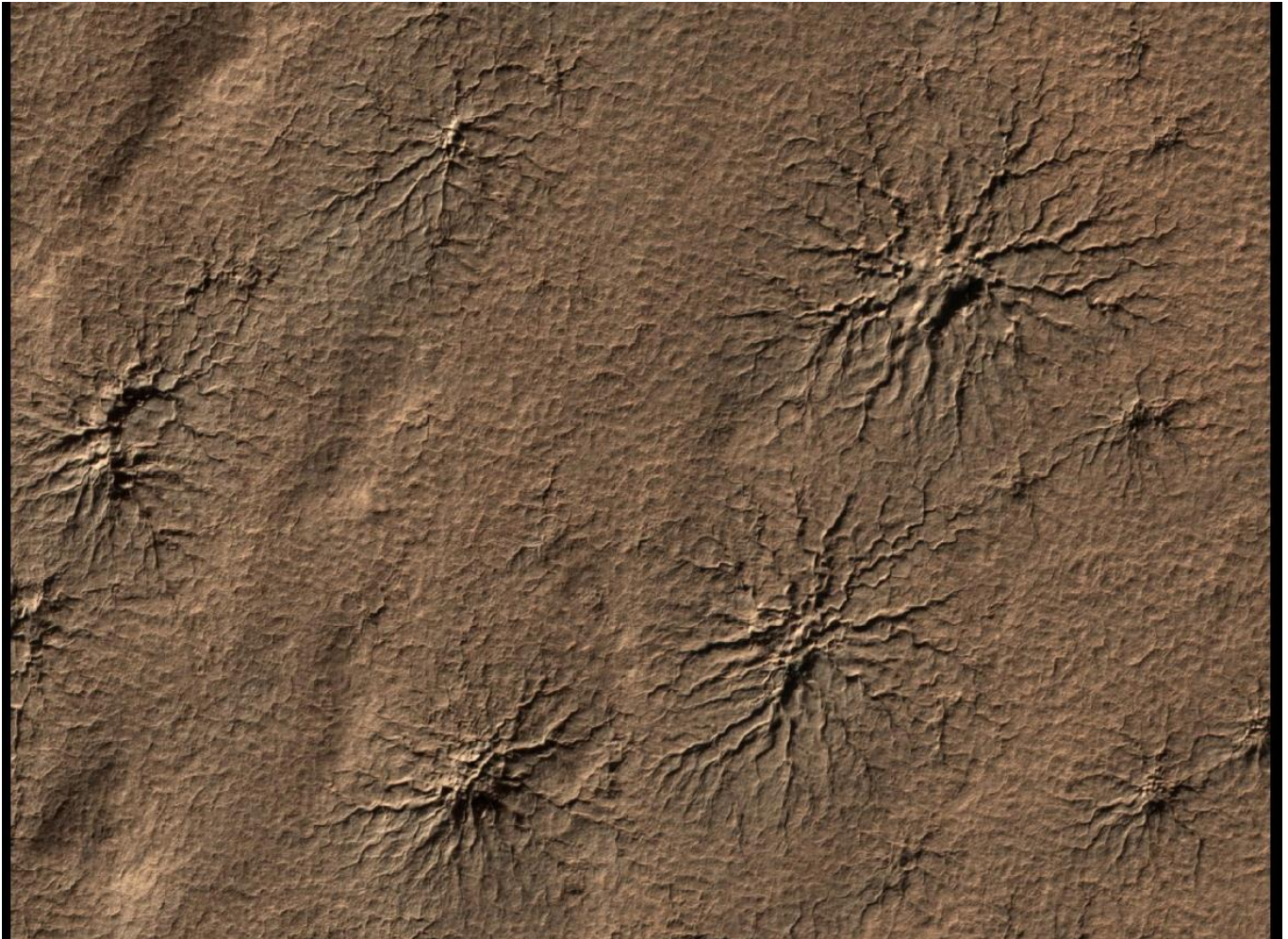
http://hirise.jpl.nasa.gov/ESP_012725_2015



Crater on Mars

Taken by HiRISE on the Mars Reconnaissance Orbiter

Image credit: NASA/JPL-Caltech/University of Arizona



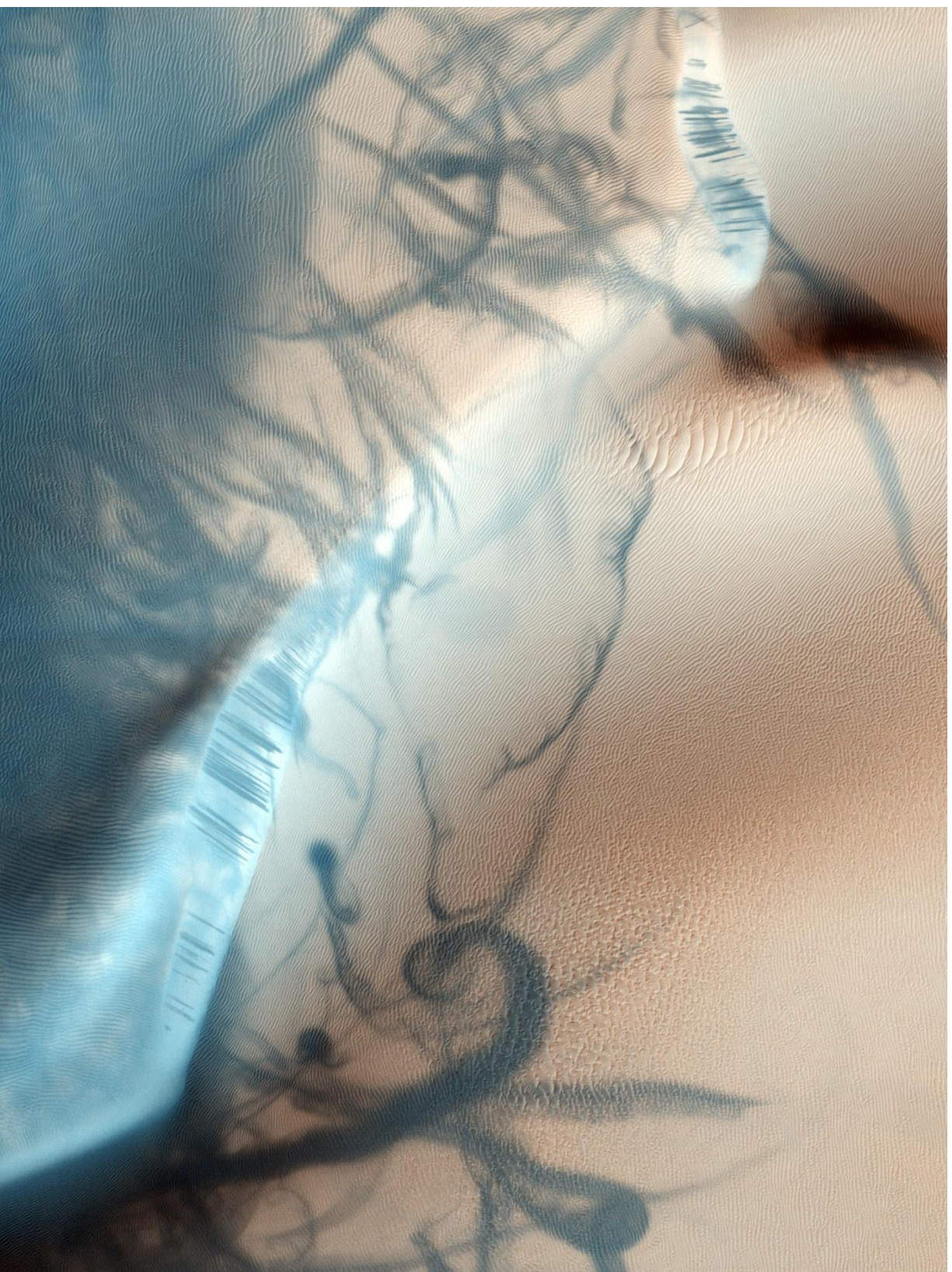
Mars

Radial Features Carved by Dry Ice

Taken by HiRISE on the Mars Reconnaissance Orbiter

Image credit: NASA/JPL-Caltech/University of Arizona

http://www.nasa.gov/mission_pages/MRO/multimedia/mro20090930.html



Mars

Martian Dust Devil Trails

Taken by HiRISE on the Mars Reconnaissance Orbiter

Image credit: NASA/JPL-Caltech/University of Arizona
<http://apod.nasa.gov/apod/ap091021.html>



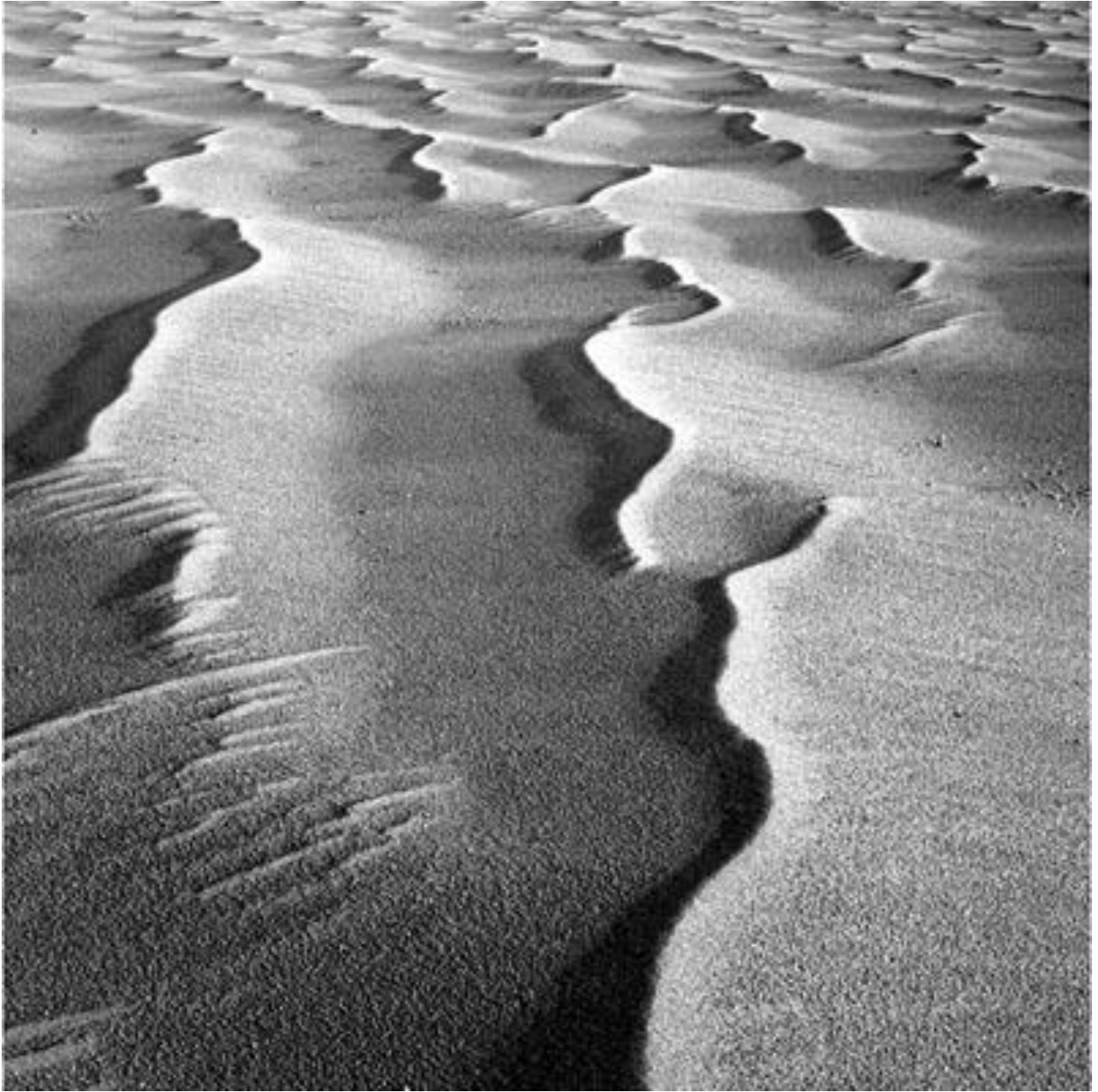
Mars' South Pole

“Swiss Cheese” terrain

Taken by HiRISE on the Mars Reconnaissance Orbiter

Image credit: NASA/JPL-Caltech/University of Arizona

<http://www.universetoday.com/85132/mars-underground-atmosphere/>



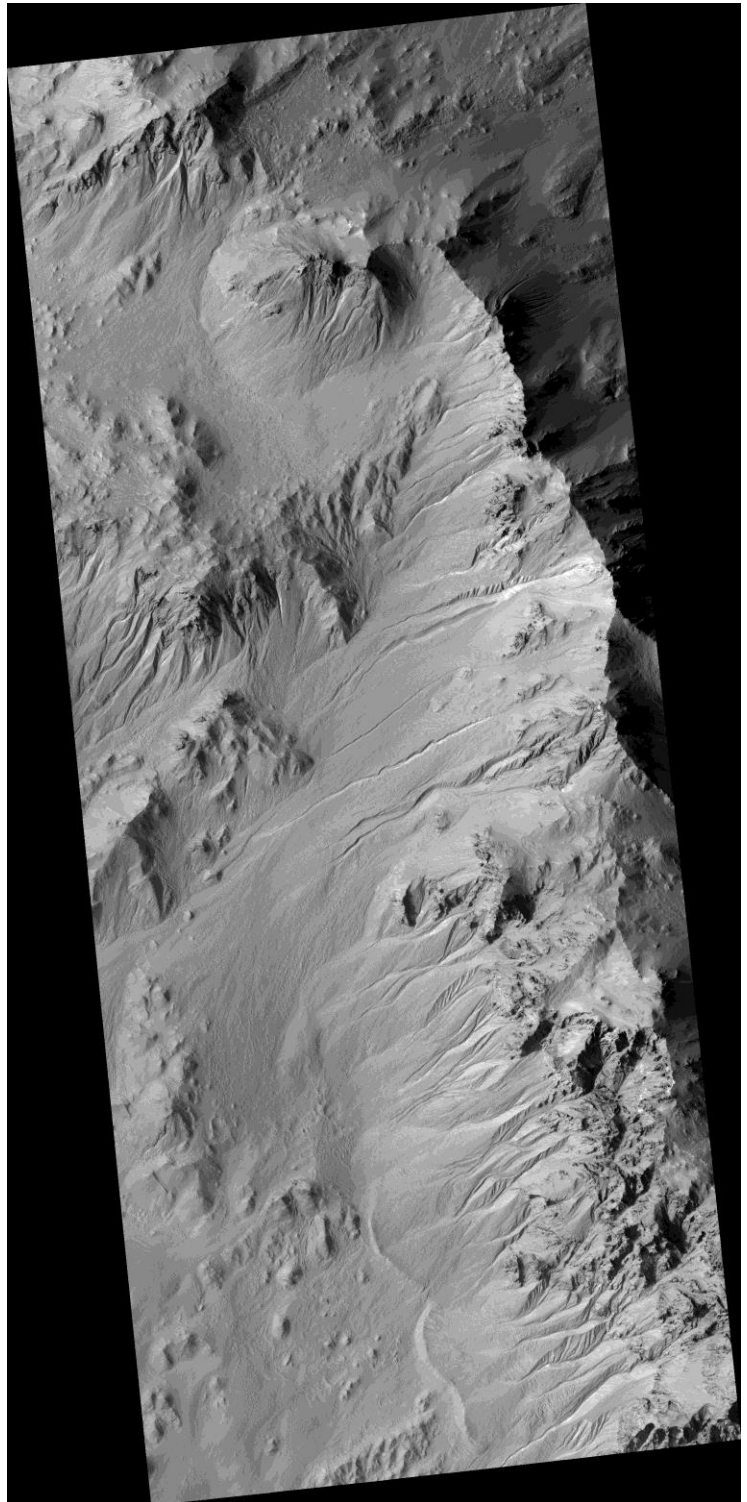
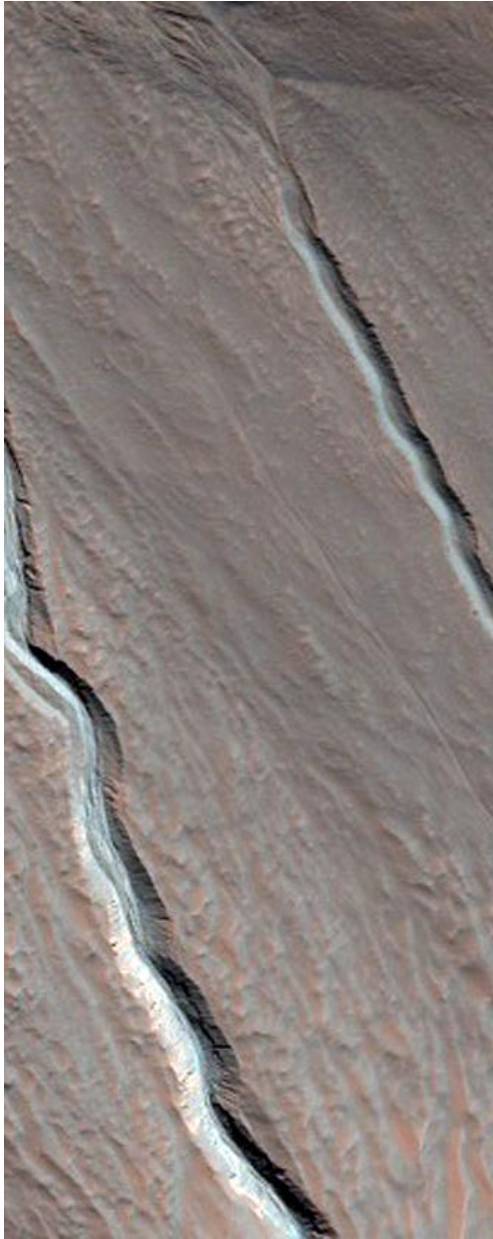
Mars

Dunes from Opportunity Rover

Image credit: NASA / JPL-Caltech / Cornell / ASU /

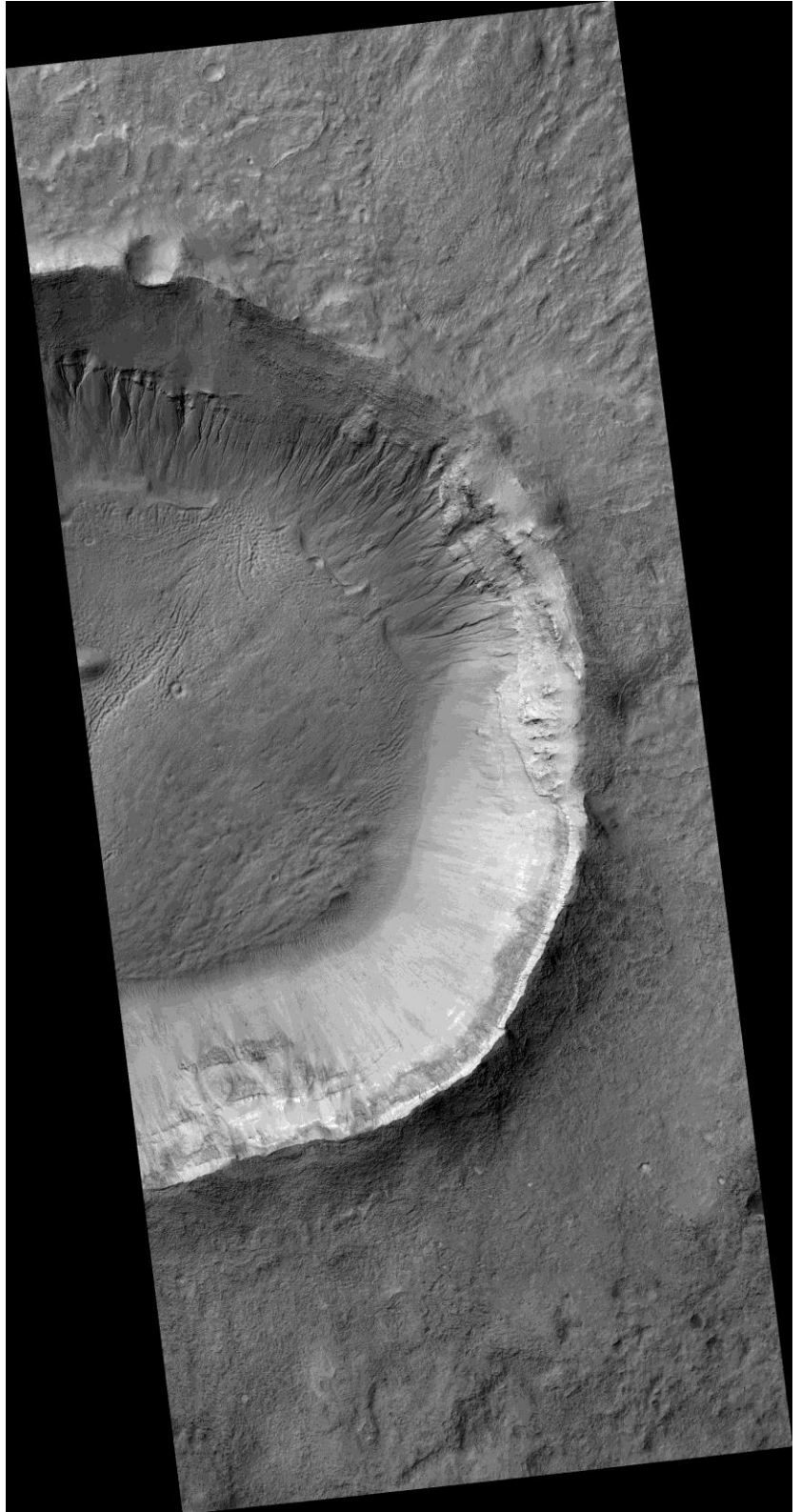
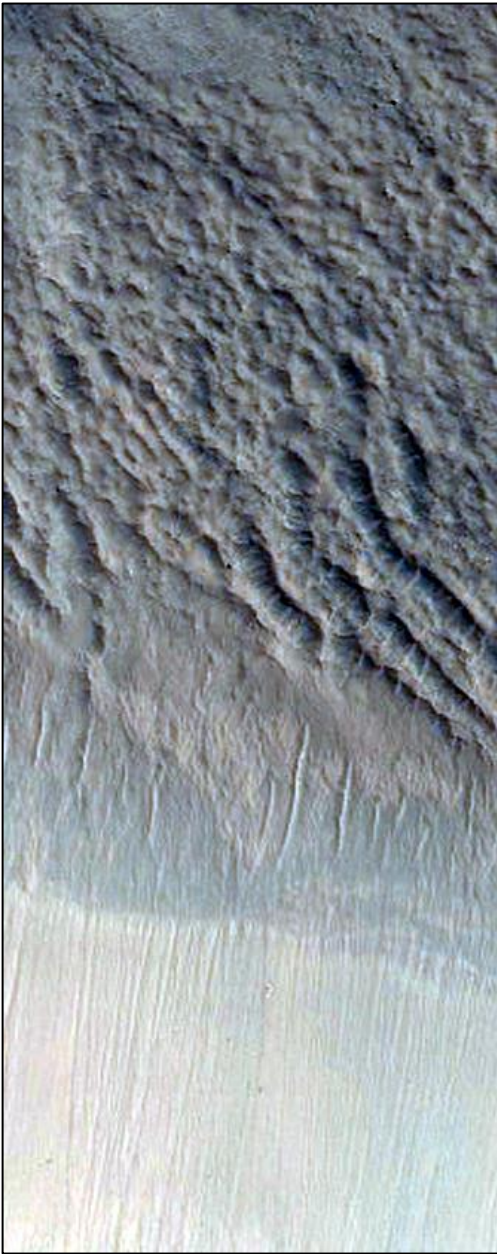
Mars
Light-toned Gully Materials
Hale Crater Wall

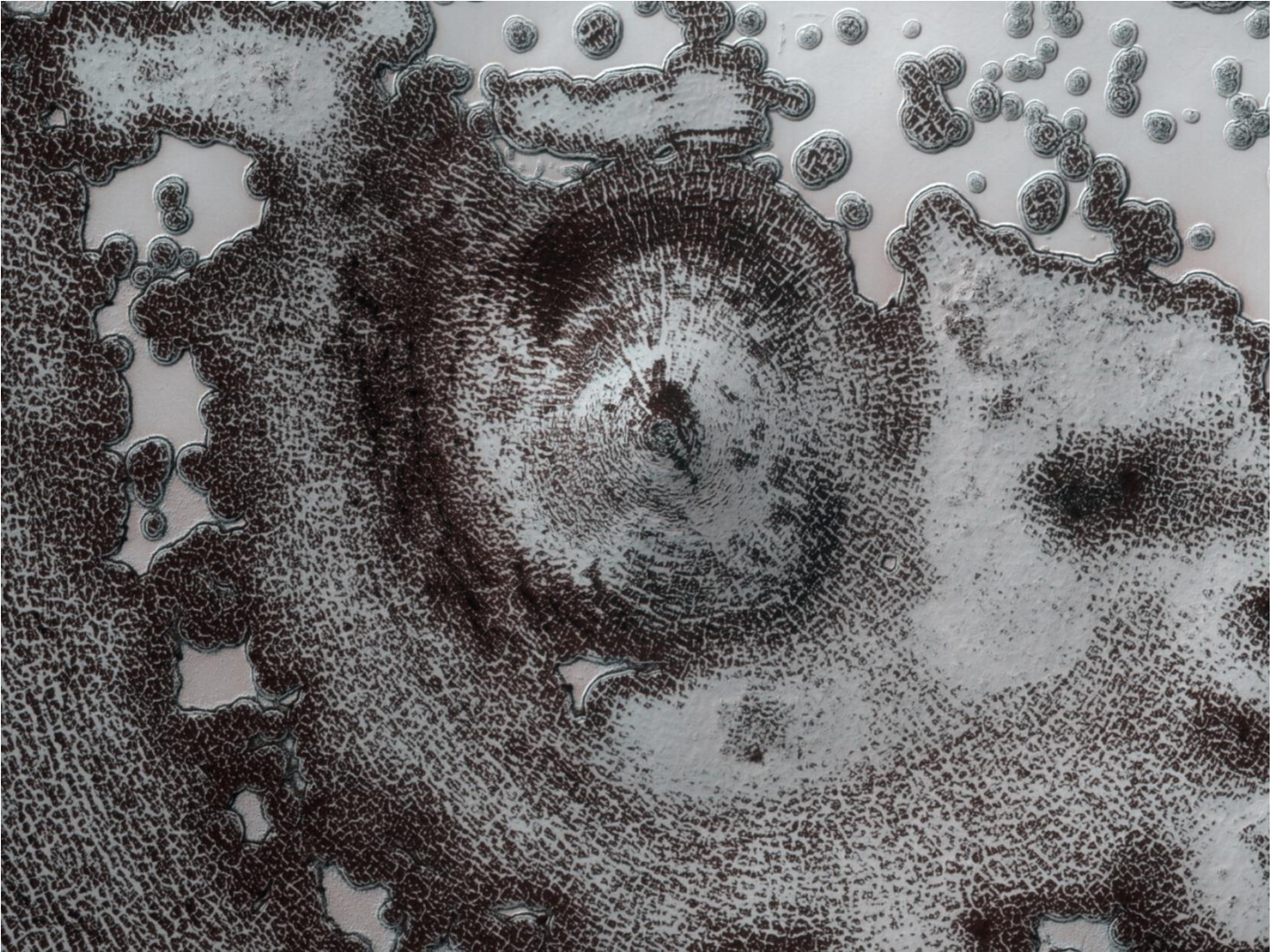
Image credit: NASA / JPL-Caltech /University of Arizona



Mars
Gullies with Meanders
Corozol Crater

Image credit: NASA / JPL-Caltech / University of Arizona





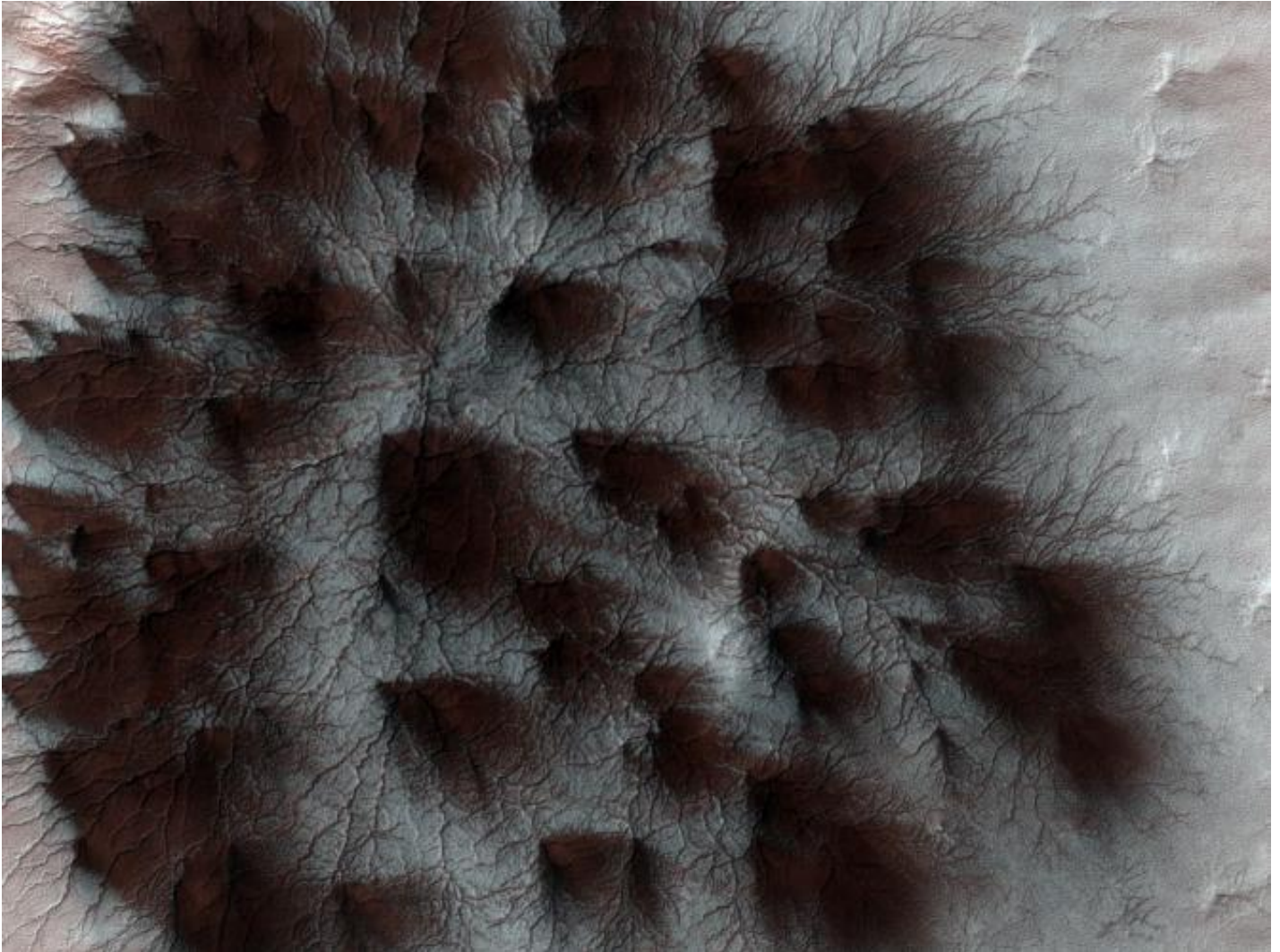
Mars

Circular Feature on Mars' South Polar Cap

Taken by HiRISE on the Mars Reconnaissance Orbiter

Image credit: NASA/JPL-Caltech/University of Arizona

<http://photojournal.jpl.nasa.gov/catalog/PIA13727>



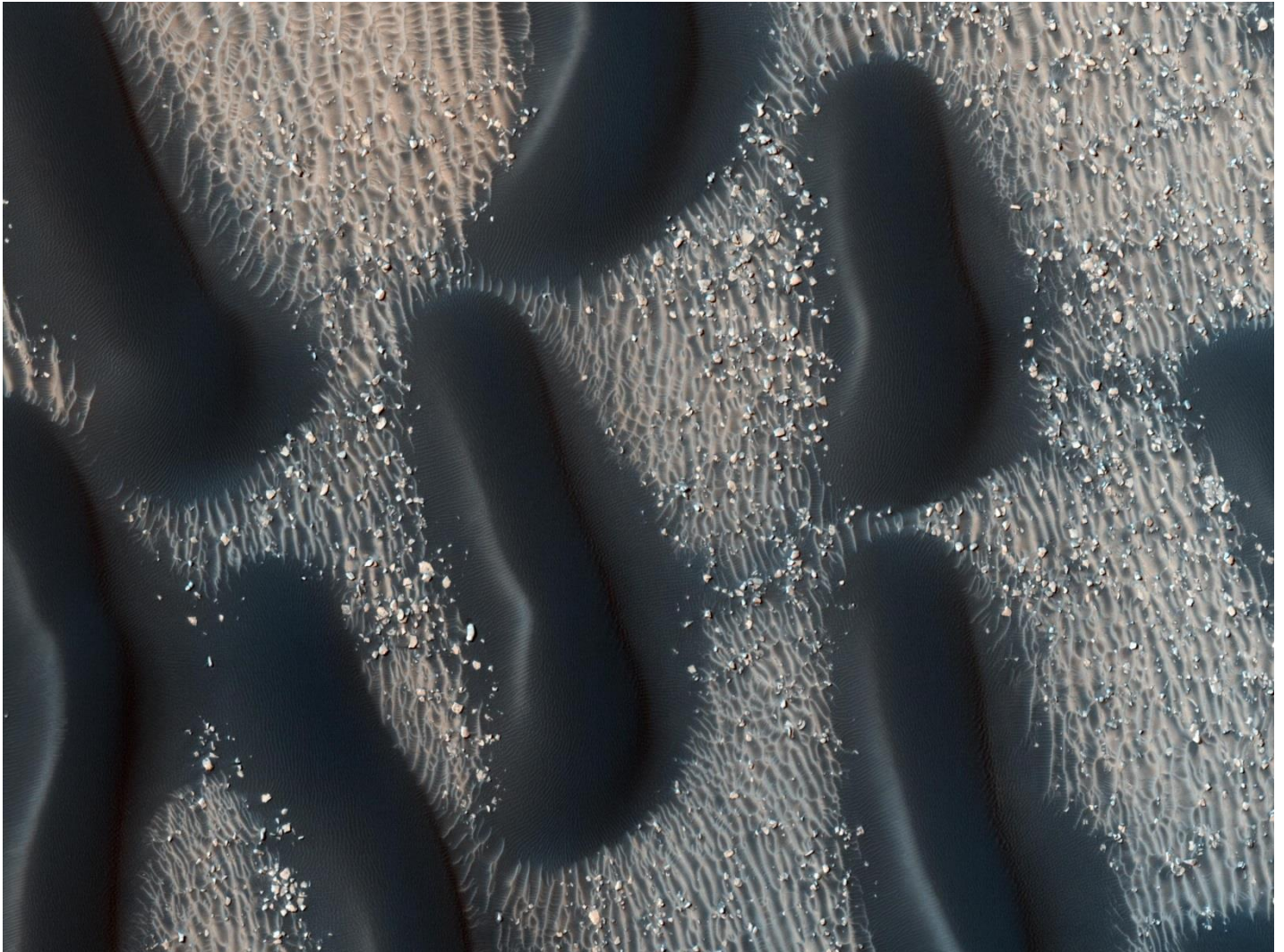
Mars

Starburst Spider, South Pole

Taken by HiRISE on the Mars Reconnaissance Orbiter

Image credit: NASA/JPL-Caltech/University of Arizona

<http://photojournal.jpl.nasa.gov/catalog/PIA11858>



Mars

Procter Crater Dune Field

Taken by HiRISE on the Mars Reconnaissance Orbiter

Image credit: NASA/JPL-Caltech/University of Arizona

http://www.nasa.gov/mission_pages/MRO/multimedia/mro20090930.html

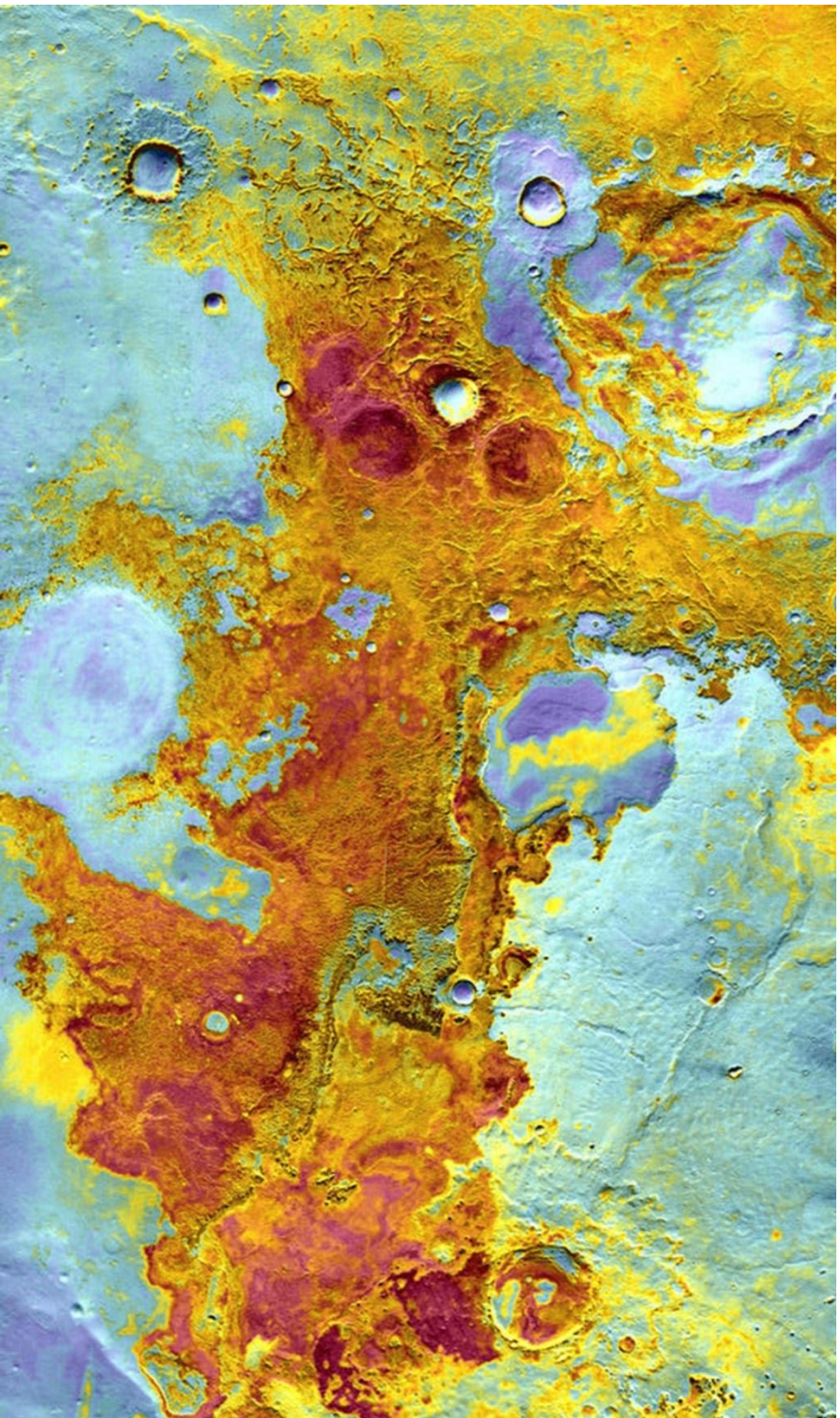


Mars

Polygonal patterned ground at the bottom of a crater

Image credit: NASA/JPL-Caltech/University of Arizona

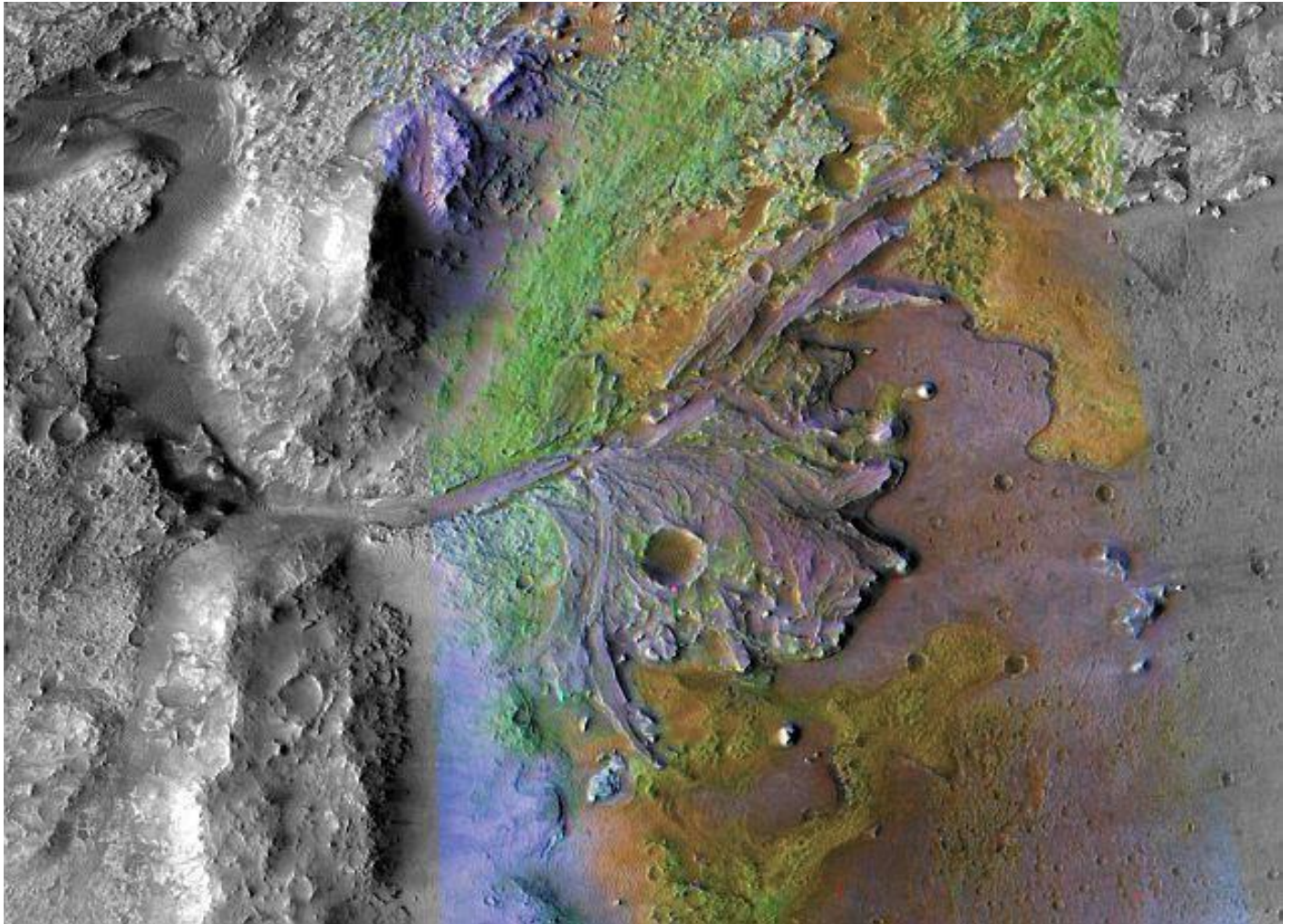
<http://mars.nasa.gov/multimedia/marsasart/?ImageID=5314>



Mars

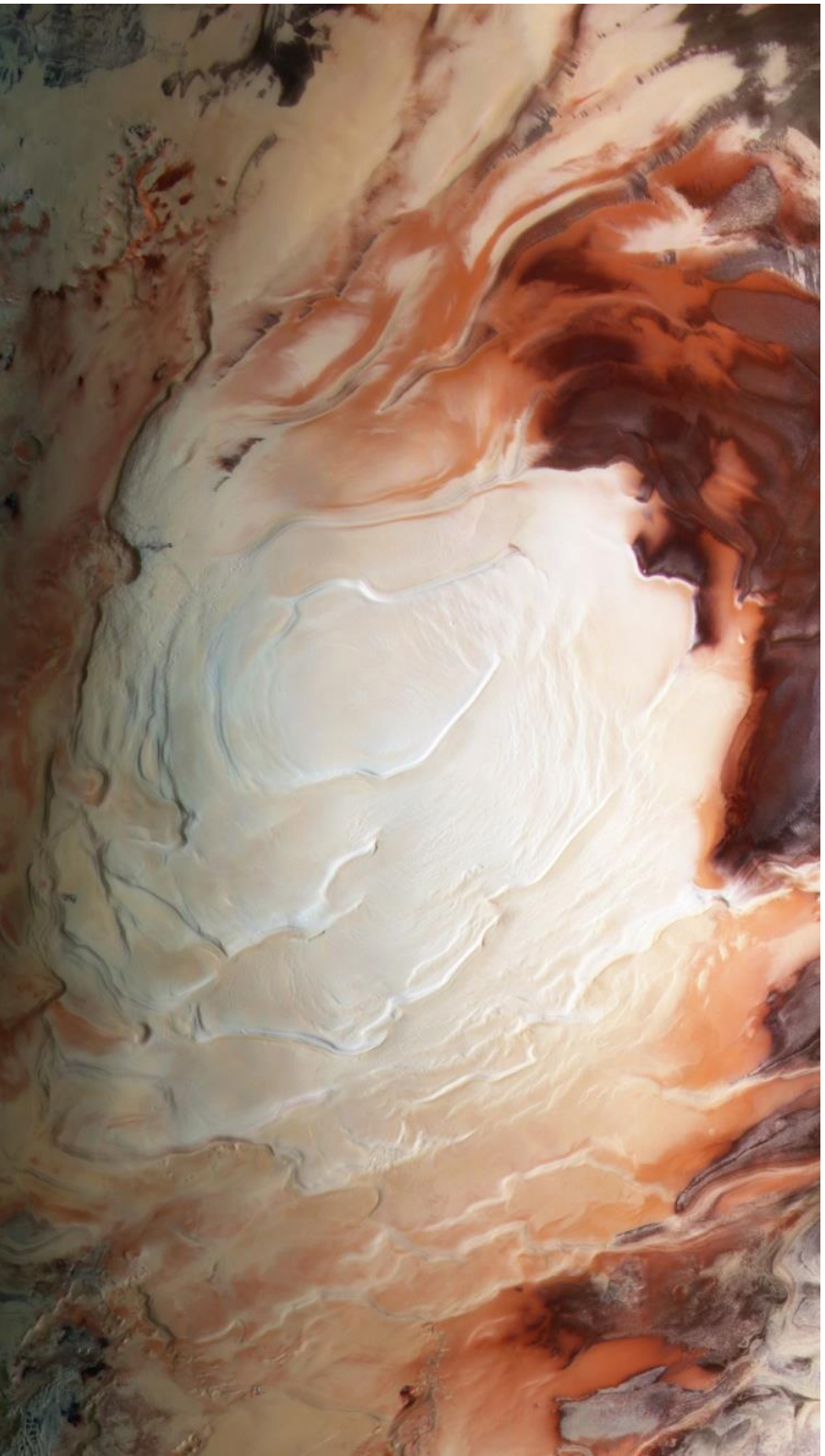
Meridiani Planum

Image credit: NASA / JPL-Caltech / Arizona State University



Mars
River Delta on
Jezero Crater

Image credit: NASA / JPL-Caltech / University of Arizona



Mars

South Polar Cap

Composite image crafted by Bill Dunford from the European Space Agency's Mars Express Orbiter
Image credit: ESA

<http://io9.com/the-southern-pole-of-mars-is-more-beautiful-than-we-eye-1250573387>